

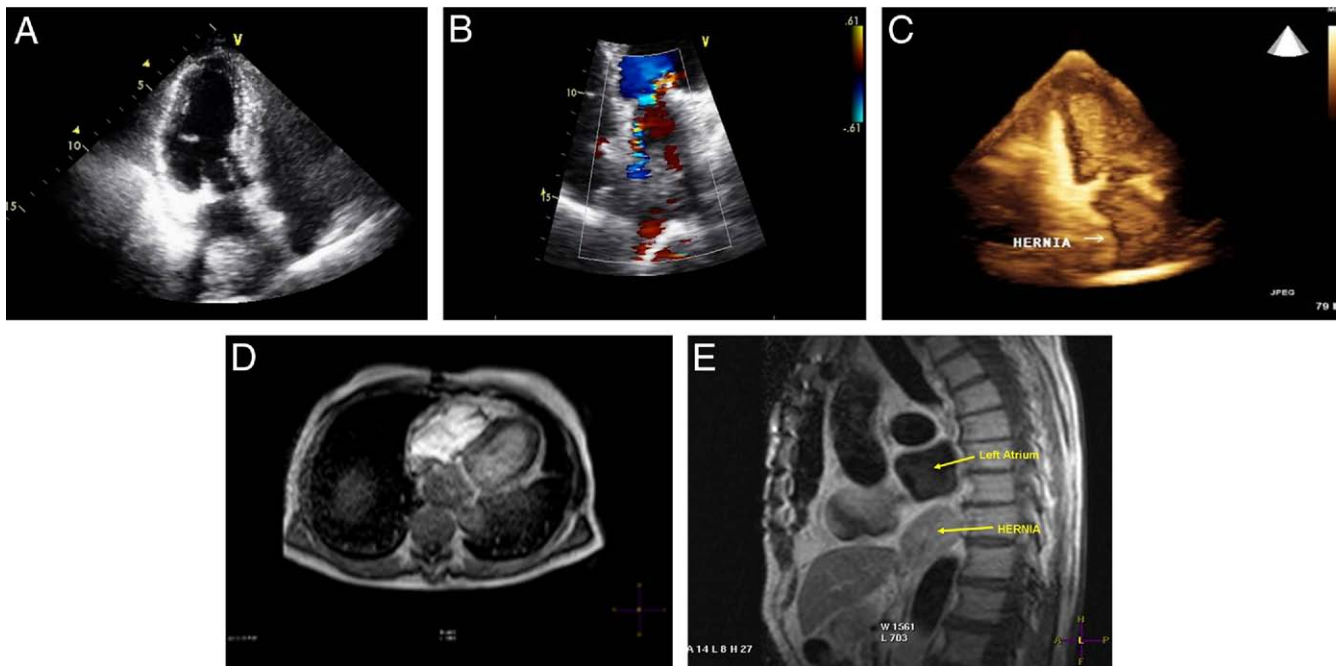
IMAGES IN CARDIOLOGY

Large Hiatal Hernia Mimicking Left Atrial Mass

A Multimodality Diagnosis

Jonathan Chan, MD, Warren J. Manning, MD, Evan Appelbaum, MD, Philip Smith, RDCS, Kenneth Rice, MD

Boston, Massachusetts



From the Beth Israel Deaconess Medical Center, Harvard-Thorndike Laboratory, Cardiovascular Division, Harvard Medical School, Boston, Massachusetts.
Manuscript received February 18, 2009; accepted February 25, 2009.

A large well-circumscribed ovoid-shaped left atrial mass was noted on multiple echocardiographic views (A). Moderate eccentric mitral regurgitant jet and abnormal high-velocity diastolic flow respected the contours of the mass (B, Online Video 1). Trans-thoracic 3-dimensional echocardiography images were suspicious of an extracardiac mass compressing on the left atrium (C). Oral administration of contrast bubbles with soda water was not able to enhance the mass. A large filling defect that was noted adjacent to the left atrium during first-pass perfusion of gadolinium during magnetic resonance imaging suggested that this was not an artefact (D, Online Video 2). Sagittal T1-weighted spin echo (black blood) images on magnetic resonance imaging demonstrated a T1 iso-intense extracardiac hiatal hernia partially compressing the infero-posterior aspect of the left atrium (E). What was initially thought to be a possible intracavitary left atrial mass on 2-dimensional echo was identified as an extracardiac hiatal hernia using multimodality imaging.