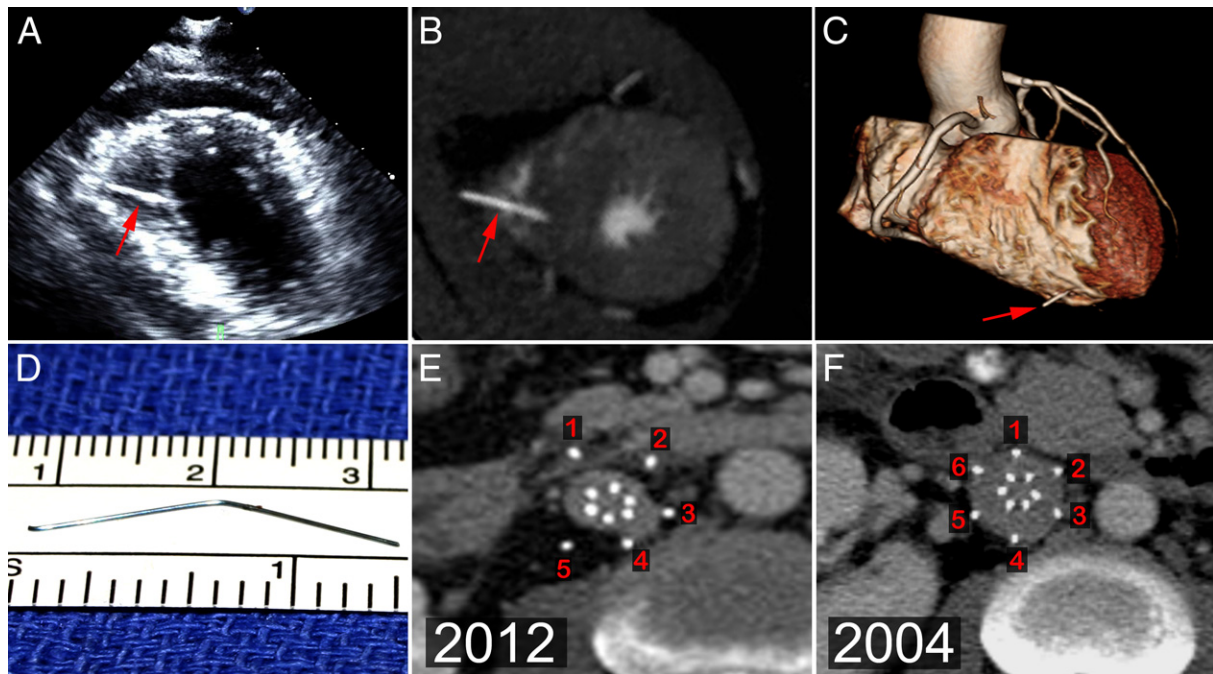


IMAGES IN CARDIOLOGY

Speared Heart, But Not on Valentine's. . .

Sorin V. Pislaru, MD, PhD,* Joseph F. Malouf, MD,* Phillip M. Young, MD,†
Nandan S. Anavekar, MBBCH,* Patricia J. M. Best, MD,* Harold M. Burkhart, MD‡
Rochester, Minnesota



From the *Division of Cardiovascular Diseases, Mayo Clinic College of Medicine, Rochester, Minnesota; †Department of Radiology, Mayo Clinic College of Medicine, Rochester, Minnesota; and the ‡Division of Cardiac Surgery, Mayo Clinic College of Medicine, Rochester, Minnesota. Manuscript received July 26, 2012; accepted August 2, 2012.

A 45-year-old man was transferred to the Mayo Clinic with a diagnosis of myocardial infarction. Emergency coronary angiography showed normal coronaries but presence of a linear opacity projecting over the cardiac silhouette (Online Video 1). Echocardiography (**A**, Online Videos 2 and 3) and cardiac computed tomography (CT) (**B and C**, Online Videos 4 and 5) with 3-dimensional reconstruction were critical in diagnosis and guiding management, showing a metallic object embedded with one end in the interventricular septum and with the other end penetrating the free right ventricular wall (**A to C**, **arrows**), a position unfavorable for percutaneous extraction. The object was retrieved during emergent cardiac surgery (**D**) and confirmed to be an embolized inferior vena cava filter strut (**E and F**). Current CT (**E**) shows the presence of only 5 outer struts compared with 6 struts on a prior CT (**F**). All struts have penetrated through the inferior vena cava wall (**E**). The filter was subsequently removed percutaneously.