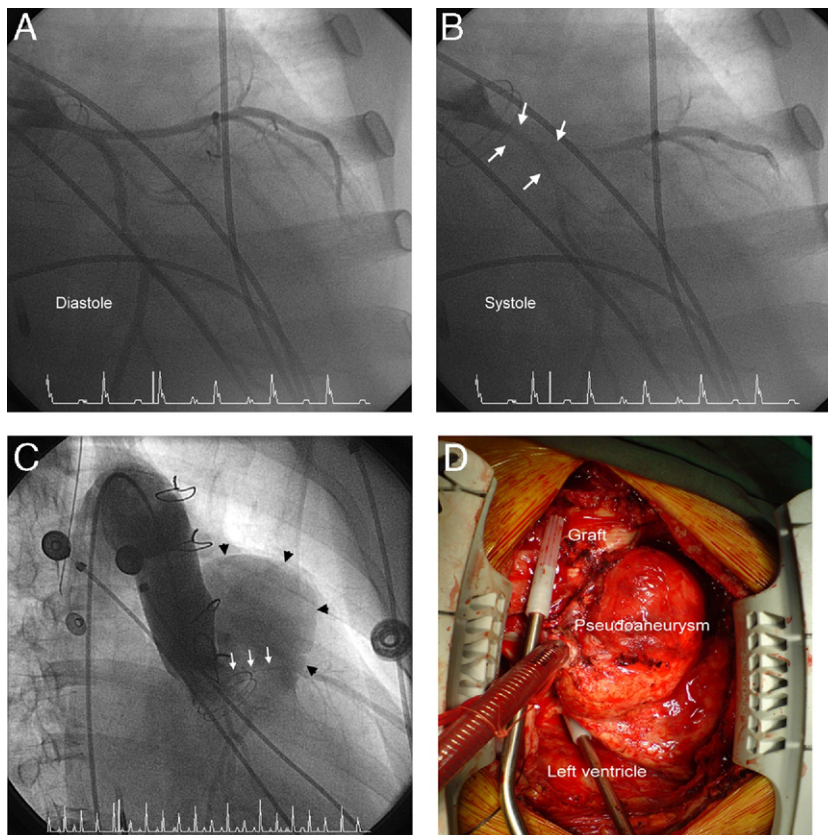


IMAGES IN CARDIOLOGY

Detachment of Composite Graft After Bentall's Operation Manifested as Acute Myocardial Infarction

Chin-Feng Hsuan, MD,* Po-Yuan Hu, MD,† Wei-Kung Tseng, MD,*‡ Thung-Lip Lee, MD,*
Ya-Feng Pan, MD,* Kwan-Lih Hsu, MD, PhD*§

Kaohsiung, Taiwan



From the *Division of Cardiology, Department of Internal Medicine, and †Department of Surgery, E-Da Hospital, Kaohsiung, Taiwan; and the Departments of ‡Medical Imaging and Radiological Sciences and §Nursing, I-Shou University, Kaohsiung, Taiwan. Manuscript received June 25, 2009, accepted July 2, 2009.

A 37-year-old woman with Marfan's syndrome underwent a modified Bentall's operation with the coronary button technique in 2007. Eight months later, she presented with non-ST-segment elevation myocardial infarction with the manifestation of acute chest pain and severe dyspnea. Electrocardiography revealed decreased R-wave with marked ST-segment depression in leads V_4 to V_6 . An emergency coronary angiography for unstable hemodynamic status revealed "systolic milking" at distal left main trunk extending to the proximal parts of the left anterior descending and left circumflex coronary arteries (**A and B, arrows**; Online Video 1). An aortography revealed an aneurysm (**C, black arrowheads**) around the root of the aortic graft, which compressed the coronary arteries at systolic phase (**C, arrows**; Online Video 2). The patient underwent emergency surgery. A pseudoaneurysm due to detachment of the composite graft at the aortic root was identified at the aorto-pulmonary groove. It surrounded and compressed the left coronary arteries (**D**). A new composite graft was implanted. Unfortunately, profound shock persisted, and the patient died 4 days later.